



www.geniecompany.com
Click here for more installation help

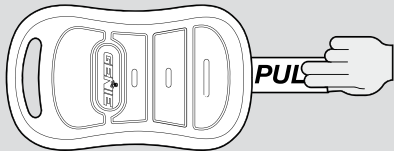
PRE-PROGRAMMED REMOTES
THE REMOTE CONTROLS INCLUDED WITH THIS OPENER MAY HAVE BEEN PRE-PROGRAMMED AT THE FACTORY, CHECK FOR IDENTIFICATION ON THE REMOTES PLASTIC BAG. IF PRE-PROGRAMMED YOU HAVE COMPLETED THE BASIC PROGRAMMING AND YOUR GARAGE DOOR OPENER IS READY TO USE.

NOTE: The following instructions are for remote control transmitters purchased separately in addition to those provided with this opener, but can also be used for remote(s) that require re-programming.

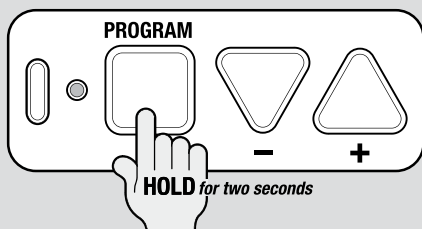
NOTE: You have 30 seconds to execute each programming step. If you see two flashing red LEDs on the powerhead, you have run out of time and must go back to the beginning of step 1 and start over. You can restart as many times as necessary to complete each step.

NOTE: All remotes (including older model remotes, whether they be one, two or three button types) work totally independent of each other. Each of your new three-button remotes can operate up to three different openers. They can be programmed to operate the same opener(s) or compatible Genie openers. Each button on each remote must be programmed separately, following these steps:

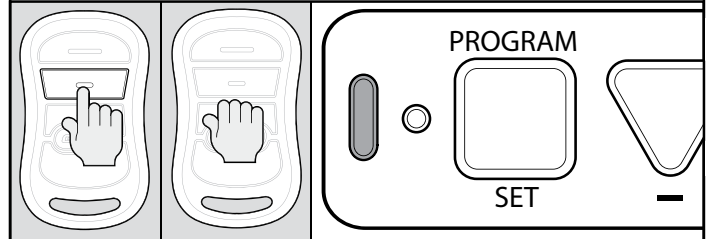
1. Remove the battery's protective film from the remote by pulling it straight out.



2. Press and hold the program button on the opener for two seconds, until the round LED turns blue, then release. The long purple LED will flash.

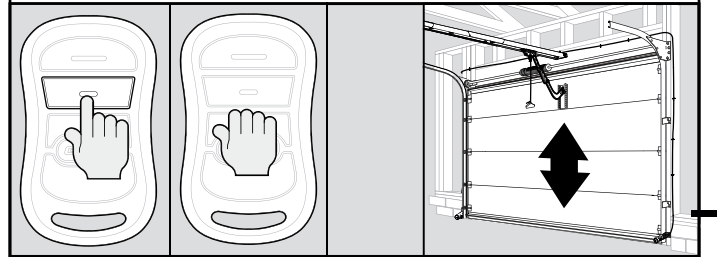


3. Slowly press and release the remote button of your choice two times. The opener LEDs will flash and go off, indicating you have successfully programmed your remote.



NOTE: While programming remote buttons, stand at least 5 feet away from the powerhead. This ensures you have proper communication between the remote and the powerhead.

4. Press and release the same button a third time and door will open or close.



To program the same remote for other garage door openers, repeat the steps above using one of the other remaining remote buttons.

REPEAT STEPS 1 TO 4 FOR EACH OPENER AND REMOTE

NOTE: It is possible to press the remote button too quickly or lightly. If the LEDs do not go off, press the remote button several more times to achieve confirmation.

NOTE: For Closed Confirm Remote with Network Adaptor, follow the instructions provided with the Closed Confirm Remote.

BASIC PROGRAMMING IS COMPLETE AND YOUR GARAGE DOOR OPENER IS READY TO USE.